

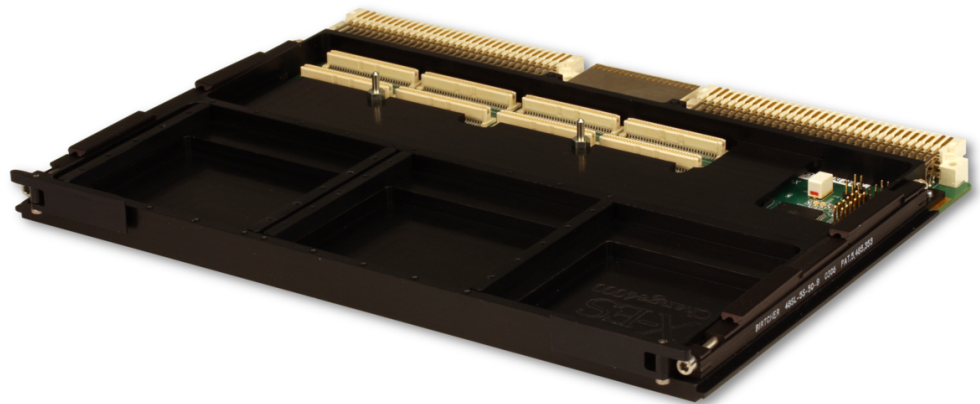
# XChange4000

**Not Recommended  
for New Designs**

Conduction- or Air-Cooled 6U VME PMC Carrier Card

Please contact X-ES Sales

- ▶ 6U VME64x, supporting VME64, VME64x, and 2eSST
- ▶ Two Processor PCI Mezzanine Card (PrPMC) sites
- ▶ Conduction or air cooling
- ▶ 32/64-bit local PCI bus
- ▶ 33/66 MHz PCI operation
- ▶ 66/100 MHz PCI-X operation
- ▶ VITA 31.1 Gigabit Ethernet backplanes



## XChange4000

The XChange4000 is a versatile conduction- or air-cooled 6U VME64x dual PCI-X PrPMC carrier card. With PCI-X support between the two PrPMC slots and the VME64x 2eSST bridge, the XChange4000 is ideal for applications requiring the high bandwidth and flexibility that PrPMC modules offer.

The XChange4000 includes a local +3.3 V power supply, so backplane +3.3 V is not required. When high-powered PrPMCs are required, the XChange4000 may be built up to use backplane 3.3 V power instead of the local supply.

# X-ES

Extreme Engineering Solutions

*...Always Fast*

### Extreme Engineering Solutions

3225 Deming Way, Suite 120 • Middleton, WI 53562

Phone: 608.833.1155 • Fax: 608.827.6171

sales@xes-inc.com • <http://www.xes-inc.com>

**VME**

- VME64 (ANSI/VITA 1-1994 R2002)
- VME64x (ANSI/VITA 1.1-1997 R2003)
- 2eSST (ANSI/VITA 1.5-2003)

**PCI**

- Either PrPMC may be monarch
- 64- or 32-bit wide PCI bus
- 33 MHz or 66 MHz frequency PCI operation
- 66 MHz or 100 MHz frequency PCI-X operation
- 133 MHz PCI-X operation possible when a single, supported PrPMC is used
- +3.3 V PCI VIO

**IPMI**

- IPMI system management support options are available

**Physical Characteristics**

- 6U VME form factor
- Dimensions: 233.35 mm x 160 mm
- 10 mm stacking height

**Environmental Requirements**

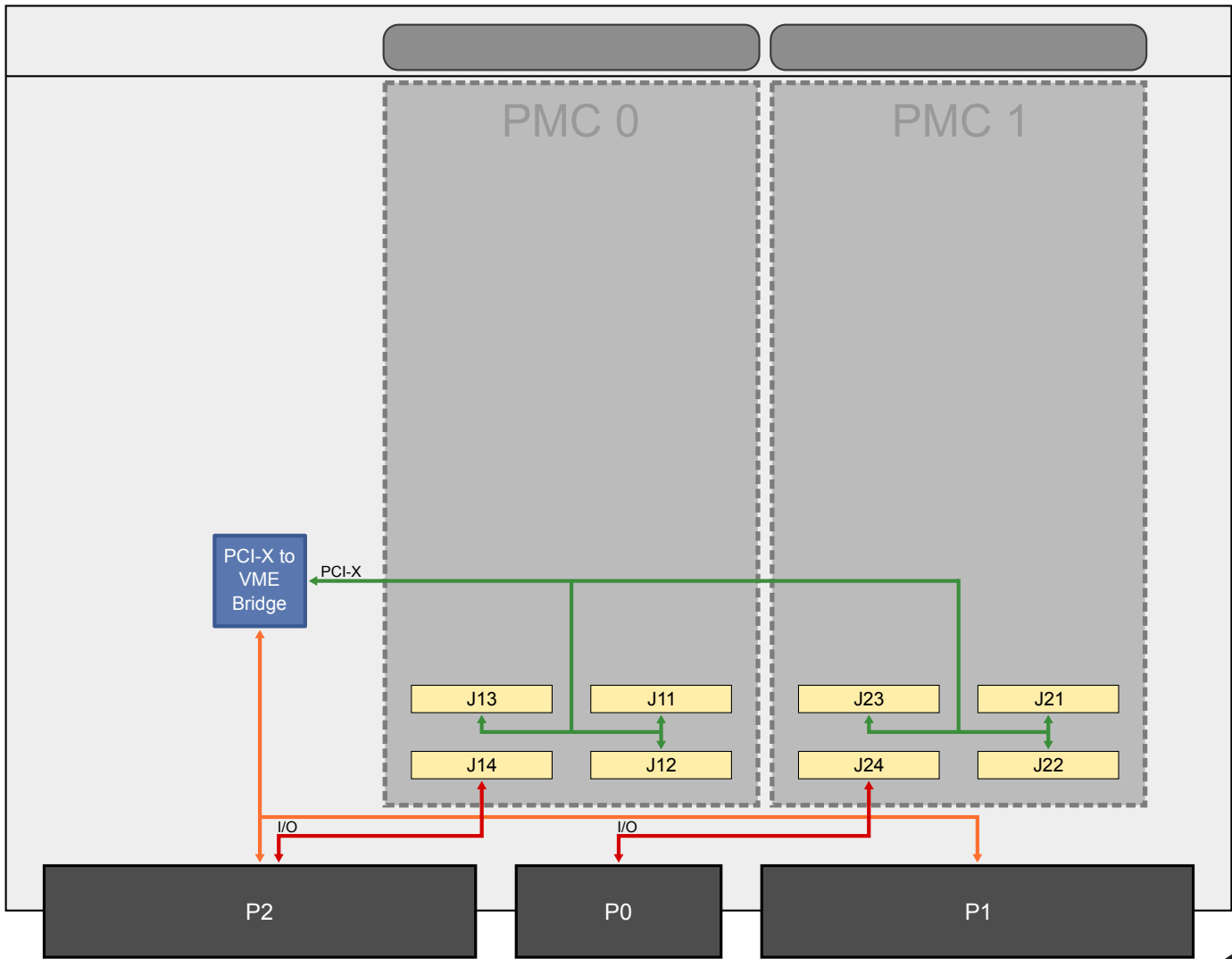
Contact factory for appropriate board configuration based on environmental requirements.

- Supported ruggedization levels (see chart below): 1, 3, 5
- Conformal coating available as an ordering option

**Power Requirements**

- 5 V, 0.6 A, 3 W

Ruggedization Level	Level 1	Level 3	Level 5
Cooling Method	Standard Air-Cooled	Rugged Air-Cooled	Conduction-Cooled
Operating Temperature	0 to +55°C ambient (300 LFM)	-40 to +70°C (600 LFM)	-40 to +85°C (board rail surface)
Storage Temperature	-40 to +85°C ambient	-55 to +105°C ambient	-55 to +105°C ambient
Vibration	0.002 g <sup>2</sup> /Hz, 5 to 2000 Hz	0.04 g <sup>2</sup> /Hz (maximum), 5 to 2000 Hz	0.1 g <sup>2</sup> /Hz (maximum), 5 to 2000 Hz
Shock	20 g, 11 ms sawtooth	30 g, 11 ms sawtooth	40 g, 11 ms sawtooth
Humidity	0% to 95% non-condensing	0% to 95% non-condensing	0% to 95% non-condensing



XChange4000

